

Directions

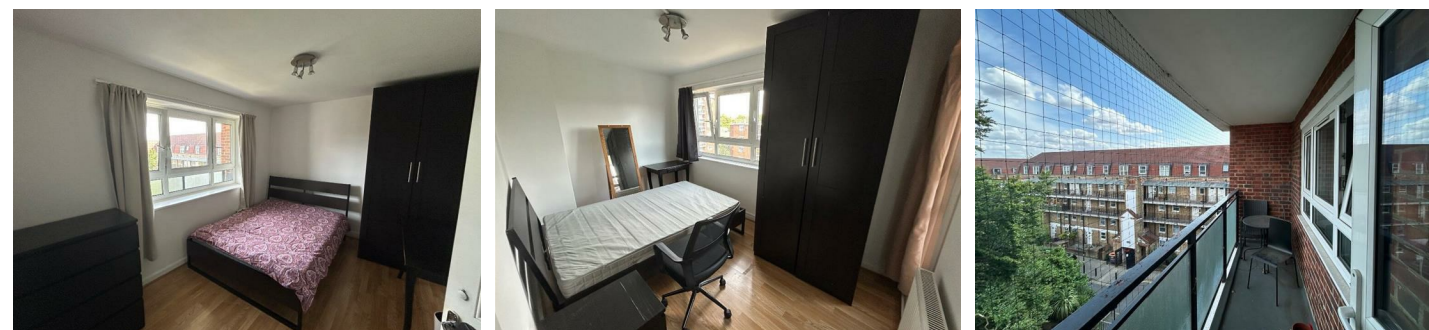
Viewings

Viewings by arrangement only. Call 02087436444 to make an appointment.

EPC Rating

C

Energy Efficiency Rating		Current	Potential
Very energy efficient - lower running costs			
(92 plus) A			
(81-91) B			
(69-80) C		78	78
(55-68) D			
(39-54) E			
(21-38) F			
(1-20) G			
Not energy efficient - higher running costs			
England & Wales		EU Directive 2002/91/EC	



20 Barclay Close, Cassidy Road, London, SW6 5QG

£3,700 Per Month

20 Barclay Close, Cassidy Road, London SW6 5QG

This spacious and well-presented four-bedroom property is ideal for students or professional sharers seeking comfortable accommodation in a highly convenient Fulham location.

The property offers four generously proportioned double bedrooms, providing ample space for study, work, and relaxation. There are two modern bathrooms, helping to ensure convenience for shared living, along with a small private balcony offering additional outdoor space.

At the heart of the home is a bright and spacious open-plan kitchen, dining, and living area, creating an excellent social space for cooking, entertaining, or unwinding after a busy day. The kitchen is well-sized with plenty of storage and workspace, while the living area benefits from a light and airy feel throughout.

Perfectly positioned close to Fulham Broadway Underground station and a variety of local bus routes, the property provides excellent transport connections into Central London and beyond. Residents will also enjoy easy access to a wide range of local amenities, including shops, supermarkets, cafes, restaurants, and leisure facilities nearby.

Combining space, practicality, and an excellent location, this property is perfectly suited for sharers looking for comfortable London living in a vibrant and well-connected area.



Council Tax Band: D

